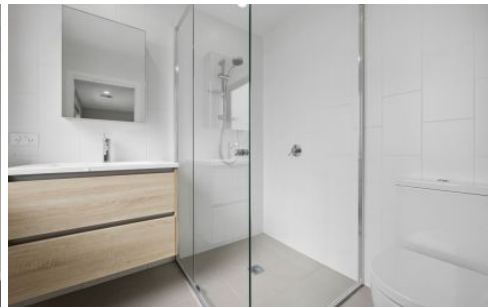
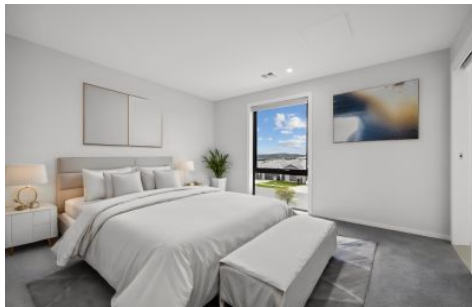


Ian McNamee & Partners



45 McFarlane Avenue Googong NSW

3 2 2

This brand new three-bedroom townhouses is the ideal home for you, whether you're starting out in life, building a better lifestyle for your family or looking to down-size, this super-convenient location makes Avia a great choice.

View : <https://www.mcnamee.com.au/lease/nsw/capital-monaro-snowy/googong/residential/townhouse/8055878>

Indoor outdoor living is a feature of the townhouses, where dual-sided living areas open to two separate courtyards. It's less than half an hour to Parliament House, the city centre or Woden, 20 minutes to Tuggeranong and just 18 minutes to the airport. A short eight-minute drive gets you to Queanbeyan.



Features include:

- Three spacious bedrooms, with built-in wardrobes
- Walk-in wardrobe & ensuite to main bedroom
- Ducted reverse cycle heating and cooling
- High quality AEG Appliances
- All residences feature double glazing to all windows and doors.
- Landscaped communal gardens

Property Management
02 6283 5555