

Ian McNamee & Partners

HANE

Where Life
Takes Flight

EMBRACE BIG, BOLD
LIVING IN YOUR CHOICE
OF 3 OR 4 BEDROOM
TOWNHOUSE DESIGNS



The name Hane, meaning "wings" in Japanese is inspired by the sweeping architectural wing-like lines that define the project's aesthetic.



From the outside looking in, Hane's contemporary lines, modern brick construction, and expansive windows tell a story of sleek, refined living. The design-centric exterior, with its subtle detailing, features two symmetrical two-story residential blocks divided by a wide shared driveway.

The Art of Contemporary Living

Each Hane kitchen is designed as the heart of the home. With Johnny and clever cabinetry, smartstone surfaces, soft-close drawers, and Hi-Res appliances, the kitchen is as beautiful as it is practical. Whether you're serving up a simple breakfast for two, creating a leisurely lunch for friends, or enjoying a special family celebration, you'll feel relaxed, connected, and inspired.



6/60 Bunyip Drive Googong NSW

3 3 2

The name Hane, meaning "wings" in Japanese, is inspired by the sweeping architectural wing-like lines that define the project's aesthetic.

Embrace big, bold, beautiful living in your choice of 3 or 4 bedroom townhouse designs, located on the doorstep of Googong West's future Neighbourhood Village. Hane is not just a home, but your sanctuary - a respite from the busy world in a lavishly sized townhouse residence that perfectly balances work, rest, and play.

The Centrepiece of Modern Living

From the outside looking in, Hane's contemporary lines, modern brick construction, and expansive windows tell a story of sleek, refined living. The design-centric exterior, with its subtle detailing, features two symmetrical two-story residential blocks divided by a wide shared driveway.

The Art of Contemporary Living

Each Hane kitchen is designed as the heart of the home.

Price : \$815,000

View : <https://www.mcnamee.com.au/sale/nsw/capital-monaro-snowy/googong/residential/townhouse/8117438>

HANE



LEVEL 1- UNIT 6

UNIT 6

3 BED, 3 BATH, 2 CAR PARKING

GROUND FLOOR 64.66m²

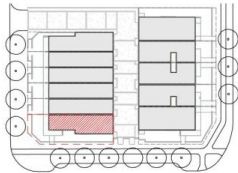
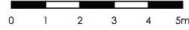
LEVEL 1 80.25m²

TOTAL LIVING 144.91m²

GARAGE 36.29m²

PORCH/ ALFRESCO 14.37m²

OPEN SPACE 95.27m²



GROUND FLOOR- UNIT 6

NOTE:
This project is provided solely for informational purposes and does not constitute an offer or contract. While every effort has been made to ensure the accuracy of the information provided, it is subject to change without notice. Prospective buyers should conduct their own due diligence and seek independent professional advice before making any decision. The marketing team and its affiliates do not accept liability for any loss or damage arising from reliance on the information contained herein. All images, illustrations, and perspectives are indicative only and may differ from the final construction.

